



THE ASIANFAST GROUP



Integrated marine solutions



Asia's Favourite Fast Ferry Operator

Tripcetera



Integrated marine solutions

PT ASIANFAST MARINE INDUSTRIES

SHIP BUILDING | SHIP REPAIR | DESIGN & ENGINEERING



**AMI Building, Jl RE. Martadinata Lot 02, Sekupang
Batam, Kepri, Indonesia 29428**

www.asianfastmarine.com

ABOUT US

PT. Asianfast Marine Industries is a one-stop integrated marine solutions provider shipbuilding and repair company located in Batam, Riau Island, Indonesia. Our team has more than 100 years of experience specializing in aluminum vessels such as Passenger Ferries, High-Speed Crafts, Naval Vessels, Coastal Patrol Vessels, Luxury Super Yacht, etc.

Our yard can serve vessels up to 12.6 meters width & 300 Displacement Weight Tonnage, and floating repair service alongside jetty for bigger vessels. Equipped with modern facilities such as 300 Ton Cimolai mobile boat hauler, CNC water cutter, fabrication workshop, mechanical workshop, and others.

Our yard's strategic location allows us to serve customers in the Asia Pacific region and further. Located 45 minutes away from Singapore, our materials and spare parts main distribution center, we are able to reduce lead time and vessel downtime to provide customers the best value for money. PT. Asianfast Marine Industries has a strategic partnership with large engine manufacturers, enabling Asianfast to do most engine repairs and overhauls in-house.

Our strategic partnership with experienced fiberglass and sail companies also enables us to offer a full range of repair and maintenance for composite Motor Yacht and Sail Yacht.

We are committed to providing the best service and cost savings to customers by continually innovating proven methods and building skilled manpower in shipbuilding and repair, alongside fulfilling Class requirements, and adhering to Safety First.

“Our experts put team over self, are passionate and committed to continuous improvement with solid integrity”.

PT. Asianfast Marine Industries has implemented and maintains a Quality Management System in compliance with the standard of ISO 9001:2015 for Ship Building and Ship Repair.



Integrated marine solutions

THE FOUNDATION OF OUR BUSINESS

Mission:

- Providing excellent, safe, and affordable services to our customers
- Maximizing returns to our shareholders
- Cultivating a work culture that values individual dignity and sustainable development
- Creating mutual success with our business partners

Vision:

To connect coastal communities through the empowerment of stakeholders and innovative solutions

Core Values:

- Commitment to continuous improvement
- Act with uncompromising integrity
- Team over self



Integrated marine solutions

ISO CERTIFIED



PT Asianfast Marine Industries has implemented and maintains a Quality Management System for Ship Building and Ship Repair which fulfills the requirements of **ISO 9001:2015** standard.



Integrated marine solutions

SHIPYARD LAYOUT



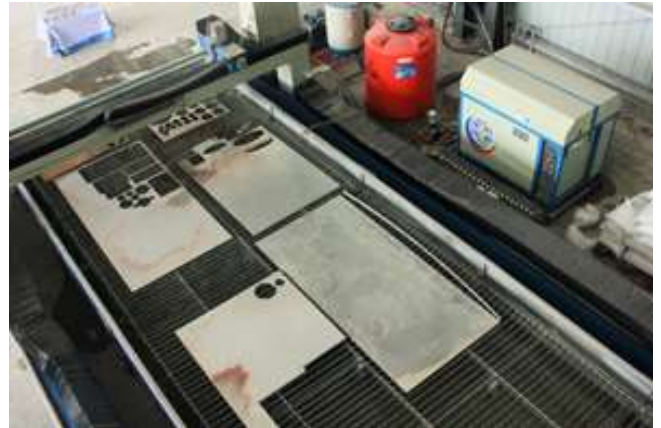
Shipyard Capacity:

- Total area 26,185 m²
- Production workshop area 2,420 m²
- Mechanical workshop with complete tools and equipments
- Mobile Hauler Capacity 300 Ton with maximum width 12.5 meter
- 2 units JCB telescopic handler machine
- 2 units 10 Ton overhead crane
- 150 meters jetty berth
- 1 Megawatt electric capacity with 3 units backup generator
- CNC water cutter 3×9 meter
- 10 rooms for mess/ship crew accommodation.

EQUIPMENT & MACHINERIES



Mobile Boat Hauler Capacity 300 Ton
with maximum width 12.5 meter



CNC Water Cutter 9 x 3 meter



50 T Crawler Crane



Telehandler Machines



Integrated marine solutions

EQUIPMENT & MACHINERIES



High Pressure Water Blaster 500 bar and
High Pressure Water Blaster 180 bar



2 and 6 Meter Lathe Machines



MIG Welding Machines



Universal Milling Machine



Integrated marine solutions

NEW BUILDS



41.60 Meter Passenger Fast Ferry

Brief Specification:

- 257 Passengers
- 2x 1440 kW V16 Engines with Fixed Pitch Propellers
- Speed 34 knots @100 MCR
- BV Class + HSC 2000 + SOLAS Chapter II
- Construction Aluminium



Integrated marine solutions

NEW BUILDS



36 Meter Catamaran Passenger Fast Ferry

Brief Specification:

- 317 Passengers
- 2x 1440 kW V16 Engines with Fixed Pitch Propellers
- Speed 31 knots @100 MCR
- BV Class + HSC 2000 + SOLAS Chapter II
- Construction Aluminium
- Passenger cabin: 2 x VIP rooms, Business class cabin, Premium economy cabin



Integrated marine solutions

NEW BUILDS



14 Meter Utility Boat

- 8 Passengers and 4 Crews capacity
- 2x Cummins QSL9 405 HP 298 kW
- Speed 18 knots
- Construction Aluminium



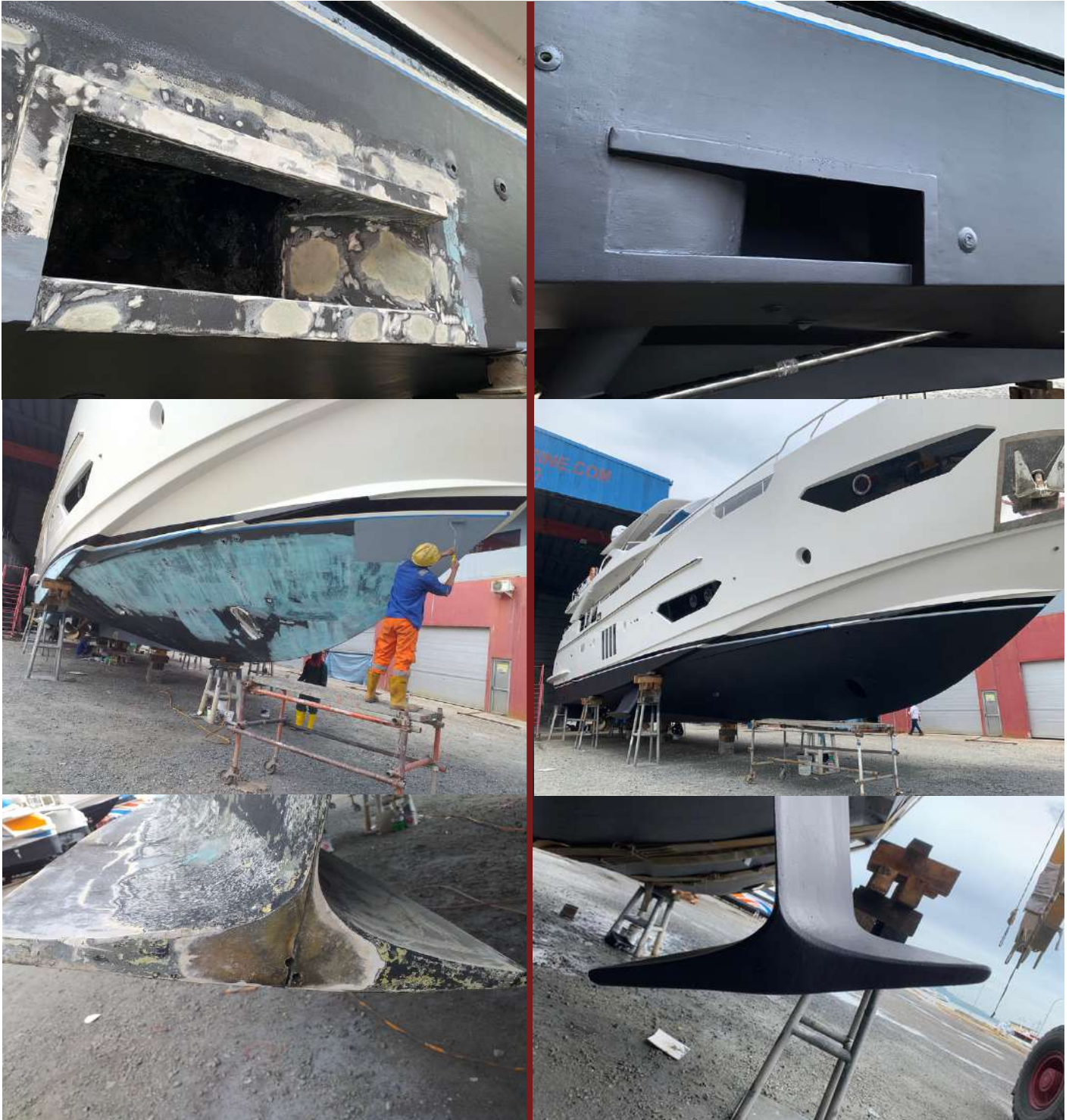
14 Meter Passenger Boat

- 28 Passengers
- 2x Cummins QSB 355HP 298 @ 2800rpm
- Speed 18 knots
- Construction Aluminium



Integrated marine solutions

REPAIR & MAINTENANCE





Integrated marine solutions

REPAIR & MAINTENANCE





Integrated marine solutions

REPAIR & MAINTENANCE



PARTNERSHIP



PT. Asianfast Marine Industries is the one and only **MTU Service Agent and Workshop** within Batam, Bintan, and Karimun Island area (Kepulauan Riau Province).

Our experienced team has a proven track record in achieving targets in terms of time and quality assurance.

We have an MTU-certified team who can perform the service and overhaul for engine models 183, 396, 2000 Series, and in the near future that 4000 Series with special tools and parts ready in-house.





Integrated marine solutions



Asia's Favourite Fast Ferry Operator



THE ASIANFAST GROUP

3 Countries Focus

SINGAPORE
INDONESIA
MALAYSIA

3 Start Ups

SHIPYARD (AMI)
TRAVEL MARKETPLACE (TRIPCETERA)
SEA TRANSPORT PLATFORMS (C9/CX)

200+

PROJECTS COMPLETED BY AMI
SHIPYARD IN 2019

9 Terminals

2 IN SINGAPORE
4 IN BATAM
3 IN MALAYSIA

> 2 million

BATAMFAST ONE WAY
AVERAGE PAX PER YEAR

25+

BATAMFAST HIGH-SPEED
FERRIES



Asia's Favourite Fast Ferry Operator

BATAMFAST

Batam Fast Ferry Pte Ltd was established in the year 1985. In the beginning, the company has purchased 2 high-speed passenger ferries, namely Bintan 2 and Bintan 3 with a capacity of 60 passengers and 70 passengers respectively as a start off to its business operation, ferrying passengers from Singapore to Pulau Batam and Bintan and vice versa.

Today, we have 25 ferries in total - 20 for international operations. We are operating daily with more than 38 return trip schedules between 9 Ferry Terminals, on 9 routes. The 9 Ferry Terminals are HarbourFront Centre Regional Ferry Terminal and Tanah Merah Ferry Terminal in Singapore; Ferry Terminal Batam Centre, Ferry Terminal Sekupang, Ferry Terminal Harbour Bay, and Ferry Terminal Nongsa Pura in Pulau Batam; Desaru Coast Ferry Terminal, Tanjung Pengelih Ferry Terminal, Pasir Gudang Ferry Terminal in Johor Malaysia. We are here to provide a higher standard of comfort to meet and exceed all the latest requirements.

It is a mere 45 minutes ferry ride from Singapore to Batam and vice versa.

All ferries are certified for the ISM (International Safety Management) Code in 1998 as directed by the IMO (International Maritime Organisation). Ferry seat capacities range from 140 to 338 passengers; each of the ferries is capable of running a speed ranging from 20 to 32 knots. All ferries are embarked to provide a luxurious sea voyage. They are equipped with the latest in navigational control, air-conditioning, some have a VIP room, business lounges, In-house video, and bar counter.

It is fundamental to become a bridge between Singapore, Malaysia, and Pulau Batam. We ensure that the sea voyage will be Safe, Fast, Comfortable, and an enjoyable experience. Whether you or your clients are traveling on business, holiday, or a short break, they will be able to relax in absolute comfort onboard our ferries.

Batamfast has been and will continue to be a popular alternative to visit Indonesia / Singapore / Malaysia anytime in absolute comfort and convenience.



Asia's Favourite Fast Ferry Operator

VESSELS



Jet Raider
Batamfast 5
Capacity: 338 seats



Ocean Raider
Batamfast 8
Capacity: 333 seats



Batamfast 18
Batamfast 18
Capacity: 300 seats



Asianfast 1
Asianfast 1
Capacity: 257 seats



Sea Flyte
Batamfast 1
Capacity: 240 seats



Sea Raider 2
Batamfast 2
Capacity: 240 seats



Golden Raider
Batamfast 3
Capacity: 240 seats



Waterfront 1
Waterfront 1
Capacity: 202 seats



Waterfront 2
Waterfront 2
Capacity: 202 seats



Asia's Favourite Fast Ferry Operator

VESSELS



Ocean Flyte
Batamfast 9
Capacity: 196 seats



Batamfast 19
Batamfast 19
Capacity: 194 seats



Batamfast 20
Batamfast 20
Capacity: 194 seats



Asean Raider 1
Batamfast 12
Capacity: 191 seats



Asean Raider 2
Batamfast 15
Capacity: 191 seats



Jet Flyte 1
Batamfast 10
Capacity: 166 seats



Jet Flyte 2
Batamfast 11
Capacity: 166 seats



Golden Image
Batamfast 16
Capacity: 150 seats



Batamfast 6
Batamfast 6
Capacity: 100 seats



Asia's Favourite Fast Ferry Operator

VESSELS



Sea Eagle 1

Sea Eagle 1
Capacity: 28 seats



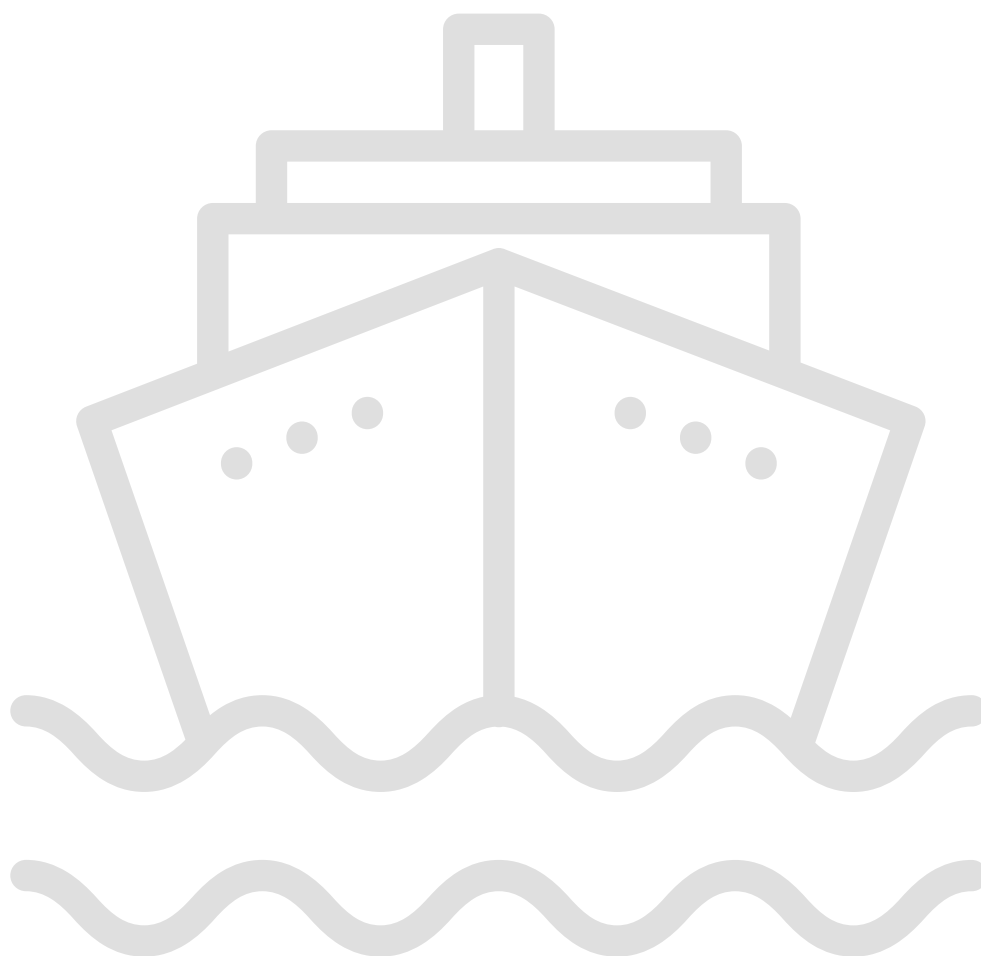
Sea Eagle 2

Sea Eagle 2
Capacity: 28 seats



In-Progress

Asianfast 2
Capacity: Estimate 300+ seats





Asia's Favourite Fast Ferry Operator

Calypso 9/Calypso X



Calypsonine

**C9 FOR TERMINALS
FERRY TERMINAL
MANAGEMENT SYSTEM**

CalypsoNine for Terminals (C9T) :

- Cloud based ferry & terminal time slot schedule management
- Cloud based terminal & passenger management system
- Real time ferry deployment management, departure & arrival scheduling
- Real time passenger boarding management
- Terminal ground handling system, check in baggage and manifest
- Secure interface with ferry operators

Interface with Ferry Operators :

- Back-end systems integration for all trip & passenger related transactions
- Supports:
 - Seat reservations
 - Passenger check-in
 - Boarding pass generation
 - Pre-immigration validation
 - Boarding gate controls and captures
- Provides flexible reporting system to:
 - Trips
 - Vessels
 - Passenger related data & transactions
 - Invoicing and billing details



Asia's Favourite Fast Ferry Operator

Calypso 9/Calypso X



**C9 FOR FERRIES
RESERVATION &
e-TICKETING SYSTEM**

Cloud based reservation and ticketing system

General :

- Intuitive user interface
- Website and mobile apps integration capability
- Secure architecture
- Data management

Booking :

- Online reservation and check-in capability
- End-to-end paperless journey

Account :

- Point of Sales (POS) system, flexible reporting, and multiple payment methods
- Flexible pricing structure & variability
- Multi currency and location capability

Ferry Management :

- Scalable ferry deployment scheduling and capacity management system
- Smart check-in and boarding pass modules for self service processing

Sales & Marketing :

- Season pass module, Membership module, Rewards and loyalty points system
- Ancillary revenue module for non-ferry ticket items such as travel insurance, prepaid sim cards/top up, vouchers, etc



Asia's Favourite Fast Ferry Operator

The Future of C9: CX

Refined shared ticketing platform

CX Modularized:

System management

Point of Sale

Kiosk

Mobile Booking

Website

CX Technology:

Mobile-first technology

Modularized

API Centric

Web widget

Monetization capable



Making CX available:

Subscription and Transaction Fees

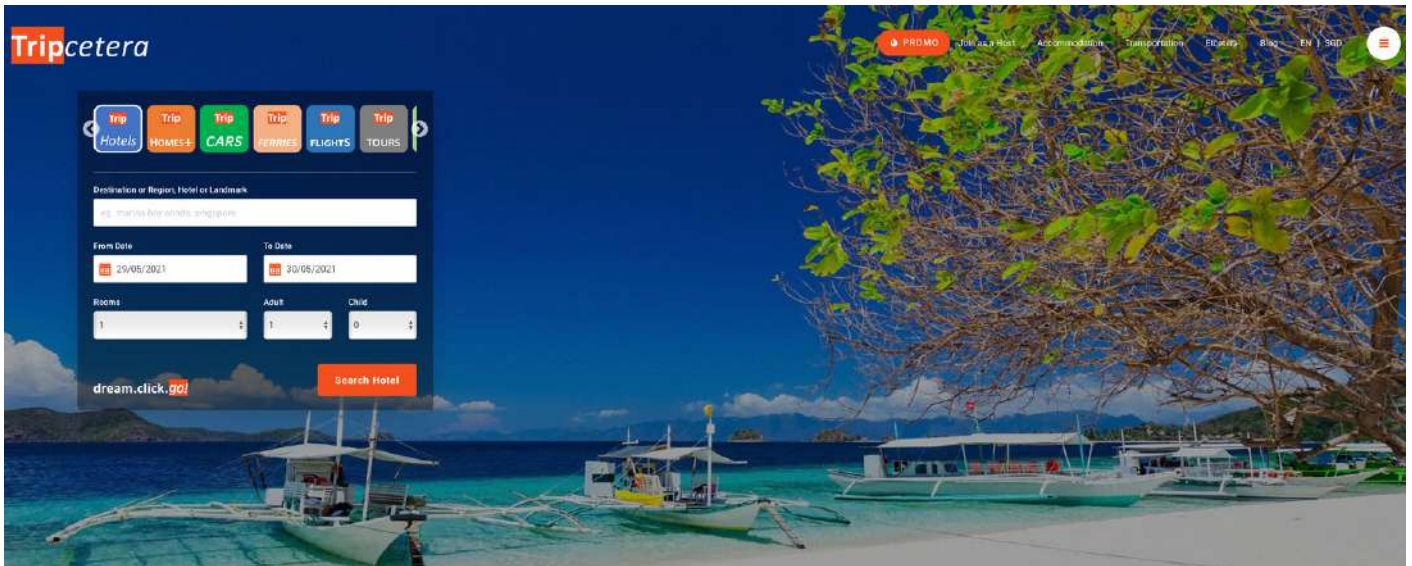
With customization (Web/Mobile App)

With Implementation Consulting & Support

Thru Marketplace

Potential market: At least 700 terminals within SEA alone

Travel Marketplace



We are an online Travel Marketplace empowering travellers with our one-stop booking platform. We connect you to individual and corporate hosts and partners who offer varied, unique, and quality accommodations, transport and other travel related services.

Our vacation packages provide unforgettable travel experiences to some of the world's most exotic and interesting destinations. Our Travel Gurus create these travel experiences that inspire you to explore and enjoy faraway places. Your dream vacation is just a few clicks away!

For the savvy and experienced traveler – you can create your own tailor-made tour and vacation itinerary. You have the power to select your choice of accommodation, your favourite airline, rent your car, buy your tickets or vouchers to the best attractions, spa, restaurant, yoga class, and whatever your heart desires – via our intuitive and convenient trip building platform.



www.Tripcetera.com

Tripcetera Overview:

A unique hybrid business model: OTA + Marketplace

- More than 200K hotel properties worldwide
- More than 11K activities worldwide
- Competitive with the big boys (Expedia, Traveloka, etc.)
- Fast, secure bookings
- State-of-the-art technologies
- Young, modern management, start-up culture
- Strong systems development and R&D team
- Lean, cost-effective operations
- Huge market potential - Travel related services and providers (from micro-businesses and smaller players)

Yield TC potential by:

- offering it as a "White Label" and B2B platform for the Travel industry, or
- Spin-off and Divest to a strategic investor



Integrated marine solutions

CONTACT US



PT. Asianfast Marine Industries
Ship Building | Ship Repair | Design & Engineering



Jl. RE Martadinata Lot 02, Sekupang
Batam, Kepri, Indonesia 29428



+62 778 321 120
+65 6270 2228



tech-sales@asianfastmarine.com
marketing@asianfastmarine.com



www.asianfastmarine.com
www.linkedin.com/company/pt-asianfast-marine-industries/
www.facebook.com/asianfastmarine