



THE ASIANFAST GROUP



Integrated marine solutions



Asia's Favourite Fast Ferry Operator

Tripcetera



Integrated marine solutions

PT ASIANFAST MARINE INDUSTRIES

SHIP BUILDING | SHIP REPAIR | DESIGN & ENGINEERING



**AMI Building, Jl RE. Martadinata Lot 02, Sekupang
Batam, Kepri, Indonesia 29428**

www.asianfastmarine.com

ABOUT US

PT. Asianfast Marine Industries is a one-stop integrated marine solutions provider shipbuilding and repair company located in Batam, Riau Island, Indonesia. Our team has more than 100 years of experience specializing in aluminum vessels such as Passenger Ferries, High-Speed Crafts, Naval Vessels, Coastal Patrol Vessels, Luxury Super Yacht, etc.

Our yard can serve vessels up to 12.6 meters width & 300 Displacement Weight Tonnage, and floating repair service alongside jetty for bigger vessels. Equipped with modern facilities such as 300 Ton Cimolai mobile boat hauler, CNC water cutter, fabrication workshop, mechanical workshop, and others.

Our yard's strategic location allows us to serve customers in the Asia Pacific region and further. Located 45 minutes away from Singapore, our materials and spare parts main distribution center, we are able to reduce lead time and vessel downtime to provide customers the best value for money. PT. Asianfast Marine Industries has a strategic partnership with large engine manufacturers, enabling Asianfast to do most engine repairs and overhauls in-house.

Our strategic partnership with experienced fiberglass and sail companies also enables us to offer a full range of repair and maintenance for composite Motor Yacht and Sail Yacht.

We are committed to providing the best service and cost savings to customers by continually innovating proven methods and building skilled manpower in shipbuilding and repair, alongside fulfilling Class requirements, and adhering to Safety First.

“Our experts put team over self, are passionate and committed to continuous improvement with solid integrity”.

PT. Asianfast Marine Industries has implemented and maintains a Quality Management System in compliance with the standard of ISO 9001:2015 for Ship Building and Ship Repair.



Integrated marine solutions

THE FOUNDATION OF OUR BUSINESS

Mission:

- Providing excellent, safe, and affordable services to our customers
- Maximizing returns to our shareholders
- Cultivating a work culture that values individual dignity and sustainable development
- Creating mutual success with our business partners

Vision:

To connect coastal communities through the empowerment of stakeholders and innovative solutions

Core Values:

- Commitment to continuous improvement
- Act with uncompromising integrity
- Team over self



Integrated marine solutions

ISO CERTIFIED



PT Asianfast Marine Industries has implemented and maintains a Quality Management System for Ship Building and Ship Repair which fulfills the requirements of **ISO 9001:2015** standard.



Integrated marine solutions

SHIPYARD LAYOUT



Shipyard Capacity:

- Total area 26,185 m²
- Production workshop area 2,420 m²
- Mechanical workshop with complete tools and equipments
- Mobile Hauler Capacity 300 Ton with maximum width 13 meter
- 2 units JCB telescopic handler machine
- 2 units 10 Ton overhead crane
- 150 meters jetty berth
- 1 Megawatt electric capacity with 3 units backup generator
- CNC water cutter 3×9 meter
- 10 rooms for mess/ship crew accommodation.

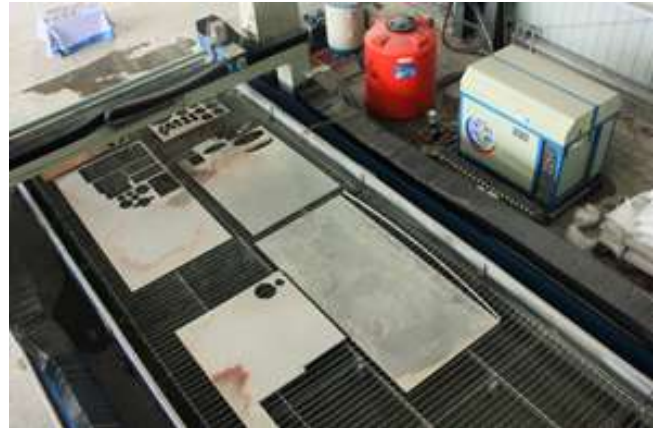


Integrated marine solutions

EQUIPMENT & MACHINERIES



Mobile Boat Hauler Capacity 300 Ton
with maximum width 13 meter



CNC Water Cutter 9 x 3 meter



50 T Crawler Crane



Telehandler Machines



Integrated marine solutions

EQUIPMENT & MACHINERIES



High Pressure Water Blaster 500 bar and
High Pressure Water Blaster 180 bar



2 and 6 Meter Lathe Machines



MIG Welding Machines



Universal Milling Machine



Integrated marine solutions

NEW BUILDS



41.60 Meter Passenger Fast Ferry

Brief Specification:

- 257 Passengers
- 2x 1440 kW V16 Engines with Fixed Pitch Propellers
- Speed 34 knots @100 MCR
- BV Class + HSC 2000 + SOLAS Chapter II
- Construction Aluminium



Integrated marine solutions

NEW BUILDS



36 Meter Catamaran Passenger Fast Ferry

Brief Specification:

- 317 Passengers
- 2x 1440 kW V16 Engines with Fixed Pitch Propellers
- Speed 31 knots @100 MCR
- BV Class + HSC 2000 + SOLAS Chapter II
- Construction Aluminium
- Passenger cabin: 2 x VIP rooms, Business class cabin, Premium economy cabin



Integrated marine solutions

NEW BUILDS



14 Meter Utility Boat

- 8 Passengers and 4 Crews capacity
- 2x Cummins QSL9 405 HP 298 kW
- Speed 18 knots
- Construction Aluminium



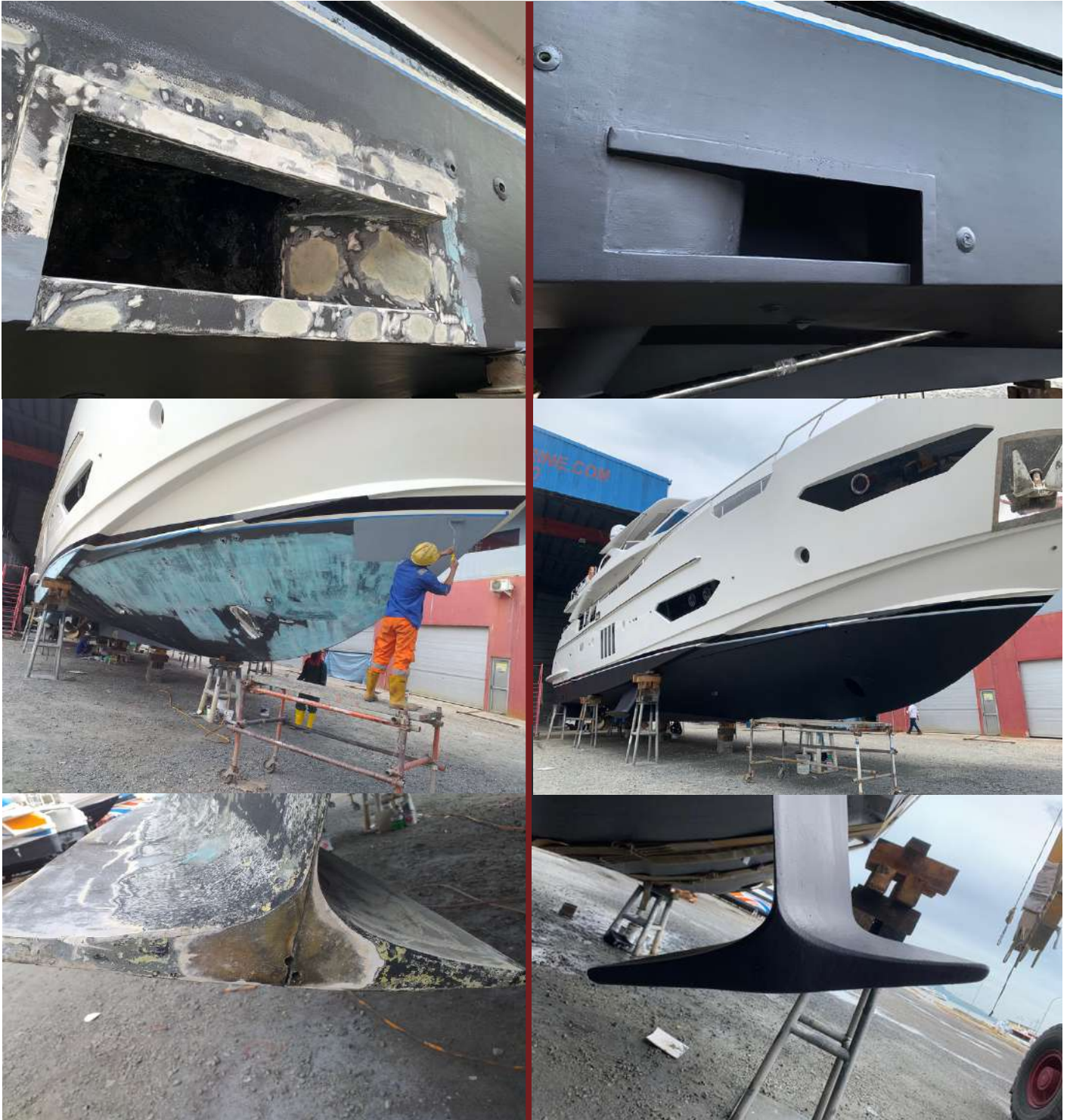
14 Meter Passenger Boat

- 28 Passengers
- 2x Cummins QSB 355HP 298 @ 2800rpm
- Speed 18 knots
- Construction Aluminium



Integrated marine solutions

REPAIR & MAINTENANCE





Integrated marine solutions

REPAIR & MAINTENANCE





Integrated marine solutions

REPAIR & MAINTENANCE



PARTNERSHIP



PT. Asianfast Marine Industries is the one and only **MTU Service Agent and Workshop** within Batam, Bintan, and Karimun Island area (Kepulauan Riau Province).

Our experienced team has a proven track record in achieving targets in terms of time and quality assurance.

We have an MTU-certified team who can perform the service and overhaul for engine models 183, 396, 2000 Series, and in the near future that 4000 Series with special tools and parts ready in-house.





Integrated marine solutions

CONTACT US



PT. Asianfast Marine Industries
Ship Building | Ship Repair | Design & Engineering



Jl. RE Martadinata Lot 02, Sekupang
Batam, Kepri, Indonesia 29428



+62 778 321 120
+65 6270 2228



tech-sales@asianfastmarine.com
marketing@asianfastmarine.com



www.asianfastmarine.com
www.linkedin.com/company/pt-asianfast-marine-industries/
www.facebook.com/asianfastmarine